

# Anchored PowerLoc LP

## FIXED RESILIENT SYSTEMS

Anchored PowerLoc LP provides added benefits to our original PowerLoc floor. Like the original system, our LP floor delivers dimensional stability as well as excellent ventilation and uniformity. The LP system includes the recycled rubber ECO resilient pads. The inclusion of special resilient pad slots on the underside of machined sleepers allow desired shock absorbing deflection under athletic impacts while limiting pressure on pads when pressed with heavy non-athletic loads.



INFINITY  
Wood Floors



AACER  
SPORTS FLOORING



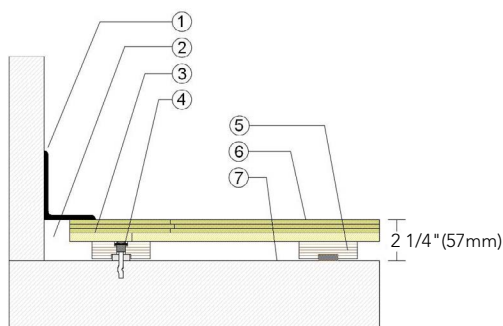
# Anchored PowerLoc LP

Selected for new and retrofit sports floor applications, Anchored PowerLoc LP offers excellent reaction to athletic activities and desired resilient pad protection and provides excellent subfloor ventilation.



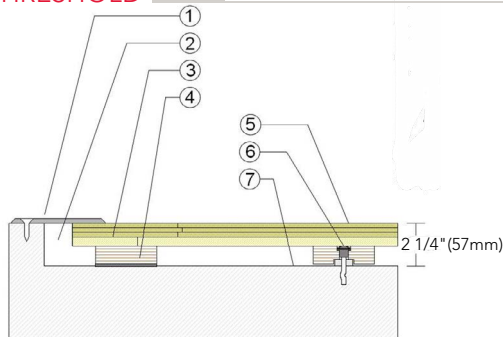
1. Infinity MFMA Maple
2. 1/2" x 5-1/2" (12mm x 140mm) Pine Subfloor
3. Pre-Engineered Plywood Sleeper
4. Steel Concrete Anchor with Bushing
5. 1/2" (12mm) recessed ECO pad
6. PowerVent Airflow Option

## WALL BASE



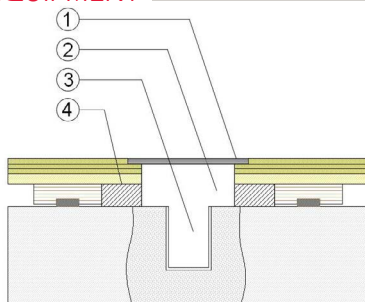
1. 3" x 4" (76mm x 101mm) Vent Cove Base
2. 1-1/2" (38mm) Min. Expansion Space
3. 1/2" x 5-1/2" (12mm x 140mm) Pine
4. Steel Concrete Anchor and Bushing
5. Engineered Plywood Sleeper with recessed 1/2" (12mm) ECO pad
6. 25/32" (20mm) MFMA Maple Flooring
7. Vapor Retarder

## THRESHOLD



1. 1/4" (6mm) Aluminum Threshold
2. 1-1/2" (38mm) Min. Expansion Space
3. 1/2" x 5-1/2" (12mm x 140mm) Pine
4. Engineered Plywood Sleeper with Solid Blocking Attached
5. 25/32" (20mm) MFMA Maple Flooring
6. Steel Concrete Anchor and Bushing
7. Vapor Retarder

## EQUIPMENT



1. Floor Plate
2. 1 1/2" (38mm) Min. Expansion Space Required at all Insert & Electrical Penetrations
3. Concrete Floor Penetration
4. Solid Blocking at Insert

## Anchorage

Green Status and LEED Contributors

## Drill and Pin



- FSC® Certified Maple - MR
- FSC® Certified Subfloor Components - MR
- Environmental Quality - EQ
- Regional Materials - MR

## Resilience

1/2" (12mm) ECO Pad

## Slab Depression

- 25/32" (20mm) Flooring - 2-1/4" (57mm)

## Optional PowerSleeper Systems

Anchored PowerLoc  
Anchored PowerSleeper  
Anchored PowerSleeper SE

## Optional Protection System

PowerVent™ Airflow System

## Subfloor Construction

Engineered sleepers and subfloor

## System Type

Fixed Resilient

## Testing Laboratory Partners



It is the policy of Infinity Wood Floors to continuously improve its line of products. Therefore, Infinity Wood Floors reserves the right to change, modify or discontinue systems, specifications and accessories of all products at any time without notice or obligation to purchaser.



see us at  
**Sweets.com**

